



SITE SENSITIVITY VERIFICATION REQUIREMENTS WHERE A SPECIALIST ASSESSMENT IS REQUIRED BUT NO SPECIFIC ASSESSMENT PROTOCOL HAS BEEN PRESCRIBED

PUBLISHED IN GOVERNMENT NOTICE NO. 320, GOVERNMENT GAZETTE 43110 OF 20 MARCH 2020.

PROPOSED AMENDMENT OF THE PAULPUTS WIND ENERGY FACILITY ENVIRONMENTAL AUTHORISATION, NORTHER CAPE PROVINCE

PART II EA AMENDMENT FOR ENVIRONMENTAL AUTHORISATION

Government Notice No. 320, dated 20 March 2020, includes the requirement for an Initial Site Sensitivity Verification Report to be produced for a development footprint. As per Part 1, Section 1.3, the outcome of the Initial Site Verification must be recorded in the form of a report that-

- a) Confirms or disputes the current use of the land and environmental sensitivity as identified by the national web based environmental screening tool;
- b) Contains a motivation and evidence of either the verified or different use of the land and environmental sensitivity;
- c) Is submitted together with the relevant reports prepared in accordance with the requirements of the Environmental Impact Assessment Regulations.

This report has been produced specifically to consider the RFI theme and addresses the content requirements of (a) and (b) above.

a) CONFIRMS OR DISPUTES THE CURRENT USE OF THE LAND AND ENVIRONMENTAL SENSITIVITY AS IDENTIFIED BY THE NATIONAL WEB BASED ENVIRONMENTAL SCREENING TOOL

Based on the DEFF Screening Tool, the site contains an area rated as 'Very High to High sensitivity' for both the Paulputs North WEF and Paulputs South WEF Amendments. This can be determined for the following reasons (Figure 1 and Figure 2):

- Very High Sensitivity: Low sensitivity for telecommunications; Inside or within 18 km of the Radio Astronomy Advantage Area; More than 60 km from a Weather Radar installation
- High Sensitivity: Low sensitivity for telecommunications; Between 26 and 48 km of the Radio Astronomy Advantage Area; More than 60 km from a Weather Radar installation

MAP OF RELATIVE RFI (WIND) THEME SENSITIVITY

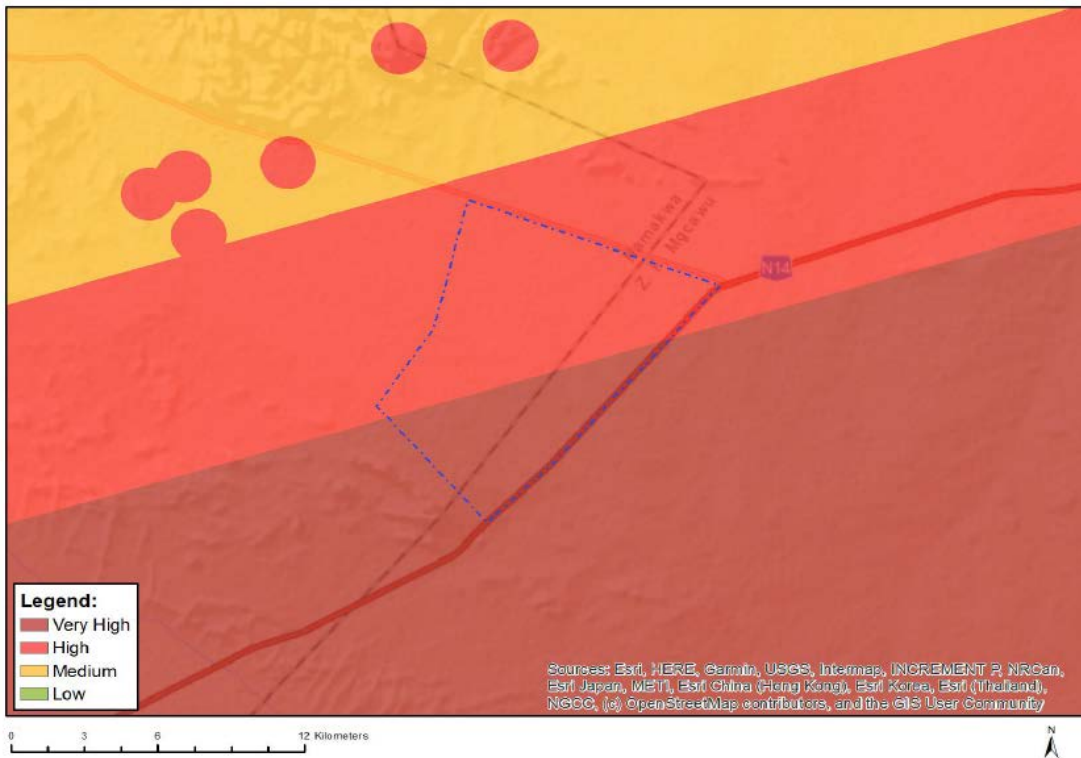


Figure 1: Map of the relative RFI theme sensitivity for the Paulputs North Site

MAP OF RELATIVE RFI (WIND) THEME SENSITIVITY

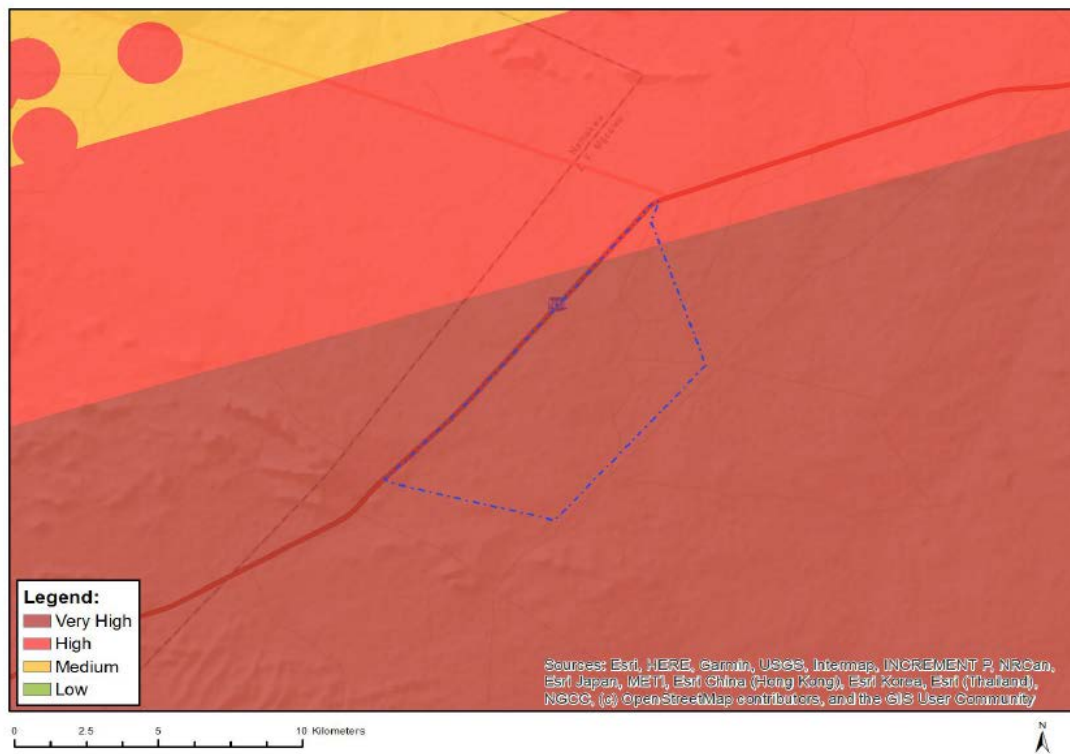


Figure 2: Map of the relative RFI theme sensitivity for the Paulputs South Site

Table 1 below provides for the EAPs 'confirmation / dispute' of the land and environmental sensitivity as identified by the National Web Based Environmental Screening Tool.

Table 1: Specialist assessments identified in terms of the national web-based screening tool for the proposed development

Identified Specialist Assessment	Assessment Protocol	Identified Sensitivity		Comment
		By DEFF Screening Report	By Specialist / EAP	
RFI Assessment	Site Sensitivity Verification Requirements where a Specialist Assessment is required but no specific assessment protocol has been prescribed, gazetted on 20 March 2020.	Very High to High Sensitivity	Undetermined	The EAP was not able to validate the findings of the Screening Tool.

b) CONTAINS A MOTIVATION AND EVIDENCE OF EITHER THE VERIFIED OR DIFFERENT USE OF THE LAND AND ENVIRONMENTAL SENSITIVITY

The EAP was not able to validate the findings of the Screening Tool. A desktop based assessment into telecommunications; Radio Astronomy Advantage Areas and Weather Radar installation areas was undertaken. The EAP could not confirm if these features are present in proximity to the proposed developments. Potential RFI has not been identified through a site visit.

In conclusion, the EAP has added the South African Radio Astronomy Observatory (SARAO) as an I&AP for the potential projects.

c) IS SUBMITTED TOGETHER WITH THE RELEVANT REPORTS PREPARED IN ACCORDANCE WITH THE REQUIREMENTS OF THE ENVIRONMENTAL IMPACT ASSESSMENT REGULATIONS

The EAP is not able to confirm the findings of the DFFE Screening Tool and as such comment will be sought from the relevant telecommunications representatives during the application process for the proposed development.

Kind Regards,



Ashleigh von der Heyden
 Environmental Assessment Practitioner
 Arcus Consultancy Services South Africa (Pty) Ltd